



MOUNTING INSTRUCTIONS

AUTOMATIC DRAWBAR

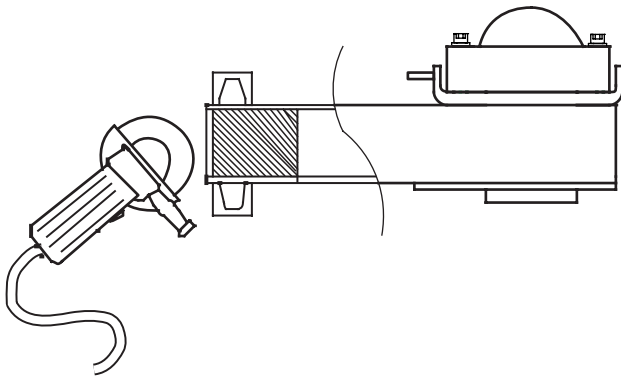


Figure 1

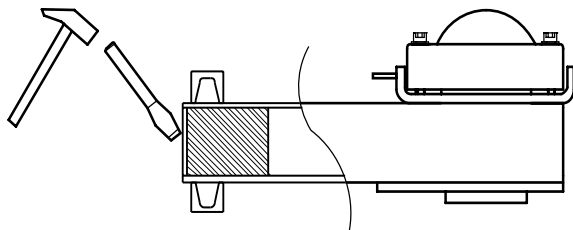


Figure 2

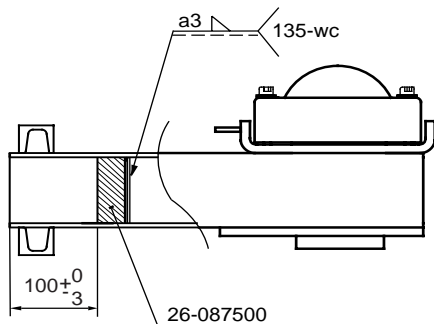


Figure 3

1. Modification of Automatic drawbar 26-080000

1:1 Place the drawbar resting on workshop trestles or similar supports.

1:2 Remove the adjusting bolts, provided to reduce play in the A-frame slider box. Cut off the rear stop on the front slider section. If the front slider is to be reused, be careful not to cut away any material from the slider profile. Grind off the front stop lugs without damaging the slider section. Remove the air box or alternatively lift the bolt with compressed air so that the slider section can be removed from the A-frame.

1:3 Grind away as much of the weld material as possible from the front edge of the old wear plate without damaging the box. See figure 1.

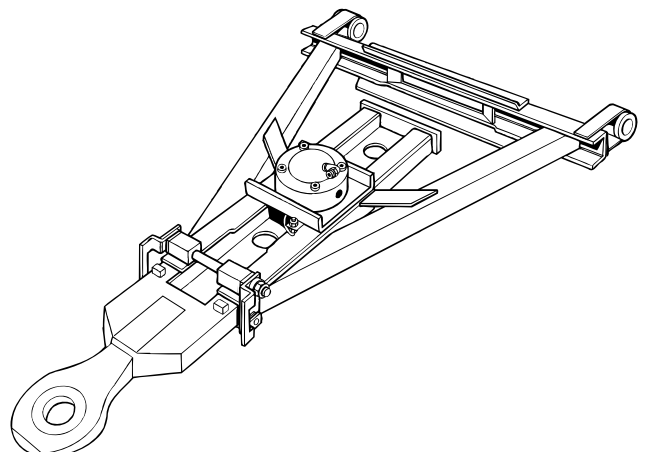
1:4 Drive in a chisel between the box and the wear plate and then bend the wear sheet until the rear weld breaks. See figure 2. Grind away all weld remains without damaging the box.



During welding on the vehicle, extreme care must be taken that electrical cabling is not damaged. Connect the welder minus cable to the chassis close to the welding point.

1:5 Position the new part (26-087500) as per figure 3 and weld only at the rear edge. The weld must not be thicker than the stop plate.

1:6 Reassemble the front slider. See item 1:10 for welding of the rear stop.



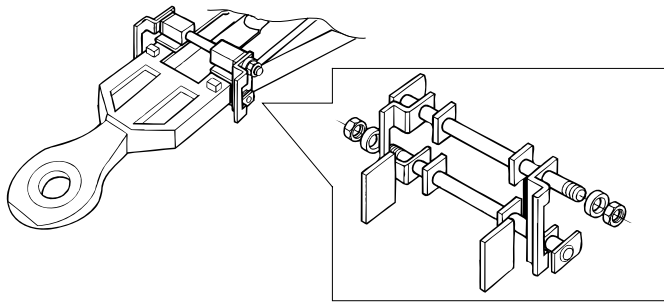


Figure 4

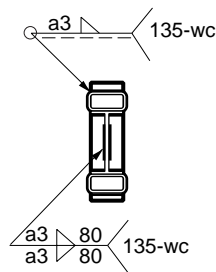
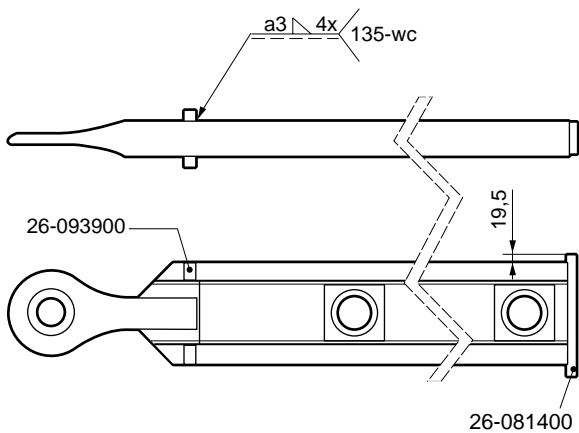


Figure 5

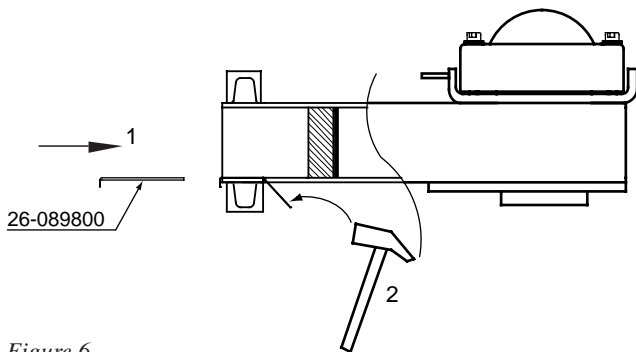


Figure 6

1:7 Mount the wear plates and the other parts as shown in figure 4. Note how the plates are mounted to ensure that the wear plates remain in place. Loosely tighten the bolts.

1:8 Remount the air box if it was removed earlier. Tighten the bolts in turn.

1:9 Lock the front slider in the drawbar's longest position with the coupling bolt and attach the rear stop to the slider.

1:10 Move the slider section back to make welding of the stop easier. See figure 5.

1:11 Move the slider fully in. Lock the coupling bolt with the drawbar at minimum length and attach the front stop lugs (26-093900) as shown in figure 5. Pull out the slider and weld round the stops.

1:12 If large vertical play exists between the A-frame slider box and the front slider, internal support plates can be mounted inside the box.

NOTE! The plates can be mounted both above and/or below the front slider and a number of plates can be used if necessary.

1:13 Knock in the plates between the slider and the A-frame slider box. Bend them round the edge of the box to ensure that they cannot move. See figure 6.

1:14 Tighten the adjustment bolts so that there is a minimum of play. Check that adjustment of length can be carried out. Adjustment checks should be carried out regularly.

For maintenance and service information see instruction 38-077200.

VBG PRODUKTER AB reserve the right to amend or alter specifications at their discretion



VBG PRODUKTER AB
Box 1216
S-462 28 VÄNERSBORG

Tel. +46-521 27 77 00
Fax +46-521 27 77 92