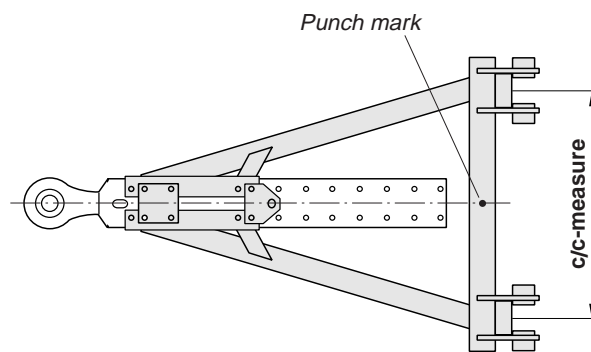


### General

Identify all parts before installation. Installation shall be done in a proper and competent manner. Always follow the instructions. Give the customer all directives and instructions so that these can be kept in the vehicle for future service and maintenance.

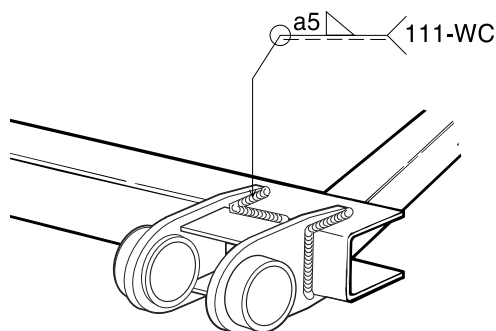


### Welding the rear hinge bracket

- Check that the A-frame chosen is approved for the intended c/c-measurement.

#### c/c-measure A-frame

	900-1000	1100 ± 15	1200 ± 15
Part no	25-023500	25-024400	25-024400
	25-020200	25-027800	25-024500
	25-023600	25-028000	25-024600
	25-023700	25-028200	25-024700
	25-023800	25-028400	25-024800



- Place the rear brackets symmetrical on the A-frame's rear crossmember. A punch mark on the crossmember marks the drawbar's centerline.
- Weld the rear brackets to the crossmember. Weld around all sides of the brackets. Suitable welding rod according to ISO E515B120 20 H or AWS E 7018.

### Fitting bolts

- Coat the conic rubber bushings with tyre mounting paste or another water soluble anti-frictional paste. Do not use mineral oil.
- Oil the entire bolt and the surface between the washers and the conic bushings.
- Fit the drawbar in the trailer drawbar bracket and mount the mounting parts according to the figure.
- Tightening torque M24 410-460 Nm

